

Med-A-Scoop

A Publication by the Indiana Society of Medical Assistants, Inc.
www.insocmedasst.org

Hello ISMA Members,

I hope that this finds you healthy and happy. Spring is on its way. The sun and warmer days have been nice to have.

I would like to thank all the ISMA members for a great 2 years as ISMA President. I am so excited that we are having our ISMA 2022 Conference, April 22 – 24 in person and it is being held at the Holiday Inn on Douglass Road in Mishawaka. If you have not registered for conference you still have time. It will be great to see everyone after two years of virtual workshops and board meetings.

I would like to encourage all ISMA members to become active in your district chapters. All districts want to continue to have CEU workshops but we need YOU to make this happen. Please let me know if you do not know what district you are in or if you are not sure who to contact I can help with that also.

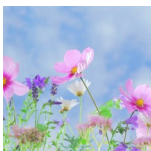
A big congratulations to all the new officers of the ISMA that will be installed April 23, 2022.

Remember this is YOUR organization and with all members we can

“Soar to New Heights.”

Karen Pershing, CMA (AAMA)

ISMA President 2021-2022



March/April 2022



Table of Contents

President's Letter	1
Creed, Mission Statement	2
Physician Advisors, Awards	3
State and District Officers	4
BOD Meeting, February 12, 2022	5-9
BOD Pre-Conference Agenda	10
ISMA Annual Business Meeting Agenda	11
Proposed Budget and Jokes	12-13
ISMA Coding Corner	14
AAMA Board of Trustees	15
ISMA App Information	16
65 th Annual Conference Information & Registration	17-18
Chapter Door Prizes & Theme Baskets	19
Joke	20
Soil-transmitted Helminths	21-22
Dates to Remember	23
Thank you	24
Final notes	25



Medical Assistant Creed

I believe in the principles and purposes of the profession of medical assisting.
 I endeavor to be more effective.
 I aspire to render greater service.
 I protect the confidence entrusted to me.
 I am dedicated to the care and well-being of all people.
 I am loyal to my employer.
 I am true to the ethics of my profession.
 I am strengthened by compassion, courage, and faith.

Indiana State Medical Assistants Code of Ethics

E is for Endeavor in our duties
 T is for Truthfulness in all we do
 H is for Helpfulness to others
 I is for Integrity in our work
 C is for courteous treatment to all
 S is for sincerity in our purpose
 Put them all together they spell ETHICS, A WORD WE MUST UPHOLD TO ATTAIN OUR GOAL

J. Marie Theobald Wilhite



State Officers:

President

Karen Pershing, CMA (AAMA)
Granger, IN 46530
E-mail: klpershing1@gmail.com

Vice President

Dianne Wimsett, CMA (AAMA)
Charlestown, IN 47111
E-mail: d.m.wimsett@hotmail.com

Recording Secretary

Heidi Sisson, CMA (AAMA)
Indianapolis, IN 46217
hsisson@encompassworld.org

Immediate Past President, AAMA Trustee

Jane Seelig, CMA-A (AAMA)
Columbus, IN 47201
E-mail: janeseelig@att.net

Treasurer

Paula Schubert, CMA (AAMA), CPT (IAPS)
Richmond, IN 47374
E-mail: schubertpaula63@hotmail.com

Med-A-Scoop Editor

Website

Pam Neu, CMA (AAMA), MBA
Wolcottville, IN 46795
E-mail: msneu@yahoo.com

District Directors:

East Central

Katja (Kit) Stine
Greenfield, IN 46140
Katjalee@live.com

First District

Clara Poirot, CMA (AAMA), CN-BC
Newburgh, IN 47630
E-mail: spiritwind629@hotmail.com

Southeast District

Joyce Edds, CMA (AAMA), CPT (ASPT)
Jeffersonville, IN 47130
mnedds@aol.com

St. Joe District

Brandi Gaumer, CMA (AAMA)
N. Liberty, IN 46554
E-mail: Blauderback86@gmail.com

Twelfth District

Rita Michel, CMA (AAMA)
Huntington, IN 46750
E-mail: remichel49@gmail.com

West Central District

Jeni Begley, CMA (AAMA)
Delphi, IN 46923
E-mail: jeni_cma@comcast.net



ISMA Physician Advisors

2021-2022

Jeff Stidam, M.D.
Jewish Hospital Louisville, KY
3 years

William Pond, MD
Anesthesiologist
Fort Wayne, IN
2 years

Kristi Peck, M.D.
Evansville Surgical Associates
Evansville, IN
1 year

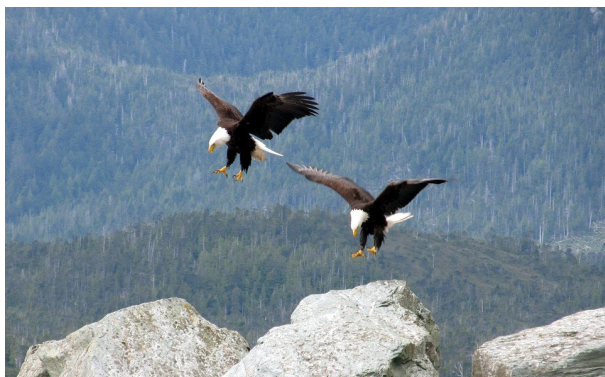
ISMA Honorary Members

1980 Herbert Dixon*
1997 Bruce Johnson
Hubert Irwin*
2008 Earl Williams*
2013 Jack Begley
Kathy Heck

ISMA Life Members

1992 Bonnie Reidenbach, CMA-AC*
1994 Patricia Kennington, RN, CMA*
2005 Eva Irwin, CMA*
2011 Eulah Dearing, CMA (AAMA)
2012 June Brown, RMA
2015 Tammy Daily, CMA (AAMA)
2018 Marjorie Mikesell, CMA
(AAMA)

*Denotes Deceased



Leon Levi Award Recipients

1988 Patricia Kennington, RN, CMA*
Jane Seelig, CMA-A
Pauline Pinnick, CMA
1990 Bonnie Reidenbach, CMA-AC*
1991 Bettye Yard, CMA-C*
1998 Norma Harmon, CMA
2001 Eva Irwin, CMA*
2002 Eulah Dearing, CMA
2010 Marjorie Mikesell, CMA
2013 Tammy Daily, CMA (AAMA)
2014 Sandra Johnson, MS, CMA (AAMA),
CPC
2016 Rita Michel, CMA (AAMA)
2019 Pam Neu, CMA (AAMA), MBA

Golden Apple Recipients

2000 Eva Irwin, CMA*
2003 Sandra Johnson, MS, CMA (AAMA), CPC
2004 Nancy Measell, CMA
2005 Cindy Abel, BS, CMA
2006 Pam Neu, CMA (AAMA), MBA
2009 Jennifer Weathers, CMA (AAMA)
2010 Rita Michel, CMA (AAMA)
2012 Nina Thierer, CM A (AAMA)
2019 Sherry Braye, CMA (AAM), BS

*Denotes Deceased

ISMA Mission Statement:

The Indiana Society of Medical Assistants, in affiliation with the American Association of Medical Assistants, strives to:

- Promote professional growth of and identify its membership through education and credentialing
- Inspire members to provide honest, loyal and efficient service to the public they serve and the proficient:
- Stimulate a feeling of fellowship and cooperation with the medical profession in improving public relations;
- Encourage and assist medical assistants in forming component chapters.

**INDIANA SOCIETY OF MEDICAL ASSISTANTS
BOARD OF DIRECTORS MEETING
February 12, 2022
Webex MEETING**

- Call to Order** President Karen Pershing, CMA (AAMA), called the meeting to order at 3:33 pm.
- Invocation** Joyce Edds, CMA (AAMA), CPT (ASPT), Chaplain, opened our meeting in prayer.
- Medical Assistant Creed** Vice President Dianne Wimsett, CMA (AAMA), read the creed.
- Introductions** President Karen Pershing, CMA (AAMA), had all officers introduce themselves.
- Credentials Report** Jane Seelig, CMA-A (AAMA), gave the credentials report. There were 32 registered, a voting power of 13, quorum of 7, a majority of 7 and a 2/3 vote of 9.
- Secretary's Report** Recording Secretary Heidi Sisson, CMA (AAMA) - The November 12, 2021, minutes were printed in the Med-A-Scoop and there were no additions or corrections.
- Treasurer's Report** Treasurer Paula Schubert, CMA (AAMA), CPT (IAPS), reported that a copy of the Treasurer's Report was emailed to the officers.

Balance as of November 13, 2021	\$83,749.95
Total Income	\$419.14
Total Expense	\$2,609.93
Total	\$81,559.16
Money Market as of February 9, 2022 #9561	\$31,696.22
Certificate of Deposit as of February 9, 2022 #0408	\$16,027.74
Total CDs as of February 9, 2022	\$47,723.96

Eva I. Irwin, CMA (AAMA)

Education Fund	\$ 3,821.61
Student Support Fund	\$ 1,998.00

Presentation of Bills Treasurer Paula Schubert, CMA (AAMA), CPT (ASPT), reported the following expenses that were over budget or not in the budget.

She had to purchase checks which cost \$28.48 over the budget amount. Jane Seelig, CMA-A (AAMA), moved we pay the extra for the checks and Jeni Begley, CMA (AAMA), second it. All voted "aye" and none opposed.

Flowers for Karen Pershing, CMA (AAMA) and Jane Seelig, CMA-A (AAMA) at National Conference which was over budget by \$65.69, Jeni Begley, CMA (AAMA), moved we pay the extra cost for the flowers and Jane Seelig, CMA-A (AAMA) second it. All voted "aye" and none opposed.

Marjorie Mikesell, CMA (AAMA), Tammy Daily, CMA (AAMA) and June Brown, RMA who our Life Members and she paid over budget by \$91.00 to renew their yearly memberships. Jane Seelig, CMA-A (AAMA), moved we pay the extra for the Life Members and Dianne Wimsett, CMA (AAMA), second it. All voted "aye" and none opposed.

Correspondence

Karen Pershing, CMA (AAMA), sent a letter to AAMA to have the wording on our membership cards change to Indiana Society of Medical Assistants.

Debby Houston, CMA (AAMA), CPC sent a letter asking if anyone is interested in running for national office.

Officers' Report

No reports at this time from the President, Vice President, Secretary, Treasurer and Immediate Past President.

Med-A-Scoop Report - I want to thank everyone who contributed to the MAS! With everyone's help the MAS was published to the website on time. Thank you, Jane, for the cartoon inserts and Dianne for sending me the extra pictures of what our members are doing in the community! The next deadline is March 5. If anyone has any contributions for me, please send them to me in a Word document.

Website Report - The website is up to date. Spam is cleared on a regular basis and the plug ins are set for automatic update. The year-end bill will be submitted in March. If anyone has any suggestions or corrections, please let me know.

Committee Reports

Budget & Finance – Paula Schubert, CMA (AAMA) CPT (IAPS) – June, August and November corrections made.

Bylaws & Standing Rules – Rita Michel, CMA (AAMA)- No report.

Certification – Marianne Hawker-Green, CMA (AAMA) – No report.

Continuing Education – Dianne Wimsett, CMA (AAMA) – The program today: "Bylaw Basics for Association, Protocol for Member/Delegate Assemblies and Parliamentary Procedures." Our guest speaker was Donald Balasa, JD, MBS, AAMA CEO and Legal Counsel. The workshop was approved for 3 CEUs (A,G). We had 304 members registered for the meeting. We had 4 non-members. We had 170 from the state of Indiana and 247 attended.

Council of Past Presidents – Jane Seelig, CMA-A (AAMA) - No report.

Eva I Irwin CMA (AAMA), Medical Assistant Program Fund – Sandra Johnson, MS, CPC, CCS-P, CMA (AAMA) – No report. Please send names of those in charge of the MA Programs to Sandy.

Historian – Joyce Edds, CMA (AAMA), CPT (ASPT) – No report.

ISMA Liaison – Tammy Daily, CMA (AAMA), – No report.

Nominating - Jeni Begley, CMA (AAMA), The following have agreed to be on the slate of candidates at our Annual Conference in April 2022:

Vice President Paula Schubert, CMA (AAMA), CPT (IAPS)

Treasurer Heidi Sisson, CMA (AAMA)

Recording Secretary Joyce Edds, CMA (AAMA), CPT (ASPT)

Med-A-Scoop Editor Pam Neu, MBA, CMA (AAMA)

Payments of dues have been made by December 31, 2021.

Jenifer Begley, CMA (AAMA), Chair

Brandi Gaumer, CMA (AAMA)

Sandra Johnson, MS, CPS, CCS-P, CMA (AAMA)

Rhonda May, CMA (AAMA)

Rita Michel, CMA (AAMA)

Membership – Jane Seelig, CMA-A (AAMA) - Renewing membership has declined so I would like the board's permission to ask why members did not renew their membership. This could provide us with some useful information for long range planning.

The question of membership could also be posed to the non-member CMA's.
Mentoring – Rita Michel, CMA (AAMA) – No report.

Procedure Manual – Joyce Edds, CMA (AAMA), - No report.

State Conference Guide – Joyce Edds, CMA (AAMA), CPT (ASPT), - No changes.

Ways & Means – Sandra Johnson, MS, CPC, CCS-P, CMA (AAMA) - No report. Reminder each district needs to bring a raffle basket for State Conference with a value of \$50. This is a great money maker for the state. Don't forget the \$25-\$30 chapter prize for the board meeting.

Committee Reports

2022 State Conference – Karen Pershing, CMA (AAMA), April 22-24, 2022. Theme is “The sky is the limit.” More information will be coming out. E-blast was sent out with the schedule. Giving out 9 CEU's.

2023 State Conference – Jane Seelig, CMA-A (AAMA), The 2023 Conference will be hosted by the East Central and Southeast Districts April 28-30, 2023 at the Hilton Garden Inn in Edinburgh. The theme is Mother Nature and Today's Medicine. Mark your calendars for a weekend of fun and learning. Start saving your pennies now for the vendors, raffles, and shopping opportunities!

BOT Report - Jane Seelig, CMA-A (AAMA) - The AAMA Board of Trustees met in Orlando Florida February 3-5, 2022. The business of the association included approval of committee reports, approval of materials for the Speaker Bureau assignments, and brainstorming for the Strategic Issues Plan. The launch of the Population Health module created by the Career Professional Development team has been well received. There will be proposed bylaws amendments, but not as many as there were last year. The membership committee recommended that the discount offered for early renewal become permanent, so a bylaw amendment is required to do this. Gina Lang, AAMA Marketing Director, expressed interest in attending a state conference to become better acquainted with the functioning of the state societies. The Illinois conference is in Bloomington, so there was discussion about her attending Indiana since it was being held closer to Chicago. Gina Lang Director of Marketing for National AAMA will be attending Indiana State Conference to Observe.

Please contact me with any ideas or issues you want help with or questions you need answered.

Thank you for your support as this officer works on behalf of the AAMA membership.

Chapter Reports

East Central District (Kit Stine, CMA (AAMA))

We met on Saturday November 8, 2021, with a workshop and meeting directly after.

Ruby Woodward, BSN, CPC, CPMA, CPC-I, COSC, CSFAC, RCC Coding Specialist and Educator Consulting Radiologist presented on “The Complexities of the Foot and Ankle” for a total of 3.5 CEUs

National Medical Assistant Convention was held the end of September in Houston, TX. Six members of the Indiana Society of Medical Assistants attended the convention. Two of those members were from the East Central District; Jane Seelig CMA-A (AAMA) and Paula Schubert CMA (AAMA). Jane Seelig’s campaign was a success, and she was elected to the Board of Trustees on the national level at the conference.

The next ISMA meeting/workshop is set for Saturday February 12, 2022, through WebEx.

We have 608 members

Kit Stine CMA (AAMA)

Director

First District (Clara Poirot, CMA (AAMA), (CN-BC))

December we had a program on Human Trafficking by Albion Bacon Center and a Christmas ornament Exchange at our meeting on December 14, 2021.

We were not able to have our meeting in January since Ivy Tech was still on Christmas Break.

In February we had another informative program from Albion Bacon Center.

In March we are planning to have Sarah Gibson from Advanced Eye Care.

We had 272 members when last checked.

Thanks,

Clara Poirot, CMA (AAMA) CN-BC

First District Director

St. Joseph District (Karen Pershing, CMA (AAMA) – No report 227 Members

Southeast District (Joyce Edds, CMA (AAMA) CPT (ASPT))

No meeting but in December had lunch together. We have 110 members.

Twelfth District (Rita Michel, CMA (AAMA) – No report.

West Central District (Jeni Begley,) CMA (AAMA) – No report. We have 132 members.

Unfinished Business

The State Quilt from the National Conference that Jane Seelig, CMA-A (AAMA) won at National Conference she gave it to the Immediate Past President Debby Houston, CMA (AAMA), CPC.

New Business

Candidate nominees for national office – Anyone interested let Karen Pershing, CMA (AAMA) know of your interest.

Presentation of the proposed budget by Paula Schubert, CMA (AAMA), CPT (IAPS). She read the proposed budget line by line and the proposed budget was also emailed out and we will vote on this at our next State Board Meeting on April 23, 2022.

Annual Meeting minutes audit committee Paula Schubert, CMA (AAMA) will do.

Annual Meeting treasures audit committee Jane Seelig, CMA-A (AAMA) will do.

Announcements

Med-A-Scoop Deadline is March 5, 2022.

Officer / Committee and Director Reports due by March 26, 2022.

Next State Board Meeting is April 23, 2022 (In Person).

Adjournment – The meeting was adjourned at 4:41 pm.

Heidi Sisson, CMA (AAMA)
Recording Secretary

ISMA Board of Directors
Pre-Conference Agenda
April 22, 2022

Call to Order	Karen Pershing, CMA (AAMA), President
Invocation	Joyce Edds, CMA (AAMA) CPT (ASPT), Chaplain
Medical Assistant Creed	Dianne Wimsett, CMA (AAMA), Vice President
Credentials Report	Brandi Gaumer, CMA (AAMA), Chair
	_____ registered _____ voting power <u>7</u> quorum _____ majority <u>2/3</u>
Introductions	Karen Pershing, CMA (AAMA), President
Secretary's Report	Heidi Sisson, CMA (AAMA)
Treasurer's Report	Paula Schubert, CMA (AAMA), CPT (IAPS)
Presentation of Bills	Karen Pershing, CMA (AAMA)
Correspondence	Marjorie Mikesell, CMA (AAMA) Corresponding Secretary
Officer Reports	President- Karen Pershing, CMA (AAMA) Vice President- Dianne Wimsett, CMA (AAMA) Secretary- Heidi Sisson, CMA (AAMA) Treasurer- Paula Schubert, CMA (AAMA) CPT (IAPS) Med-A-Scoop/Website Development- Pam Neu, CMA-A (AAMA) MBA Immediate Past President- Jane Seelig, CMA-A (AAMA)
Committee Reports	Budget & Finance- Paula Schubert, CMA (AAMA), CPT (IAPS) Bylaws & Standing Rules- Rita Michel, CMA (AAMA) Certification-Marianne Hawker-Green, CMA (AAMA) Continuing Education-Dianne Wimsett, CMA (AAMA) Council of Past Presidents-Jane Seelig, CMA-A (AAMA) Eva I Irwin CMA (AAMA) Medical Assistant Support Fund-Sandra Johnson, MS, CMA (AAMA), CPC Historian- Joyce Edds, CMA (AAMA), CPT (ASPT) ISMA Liaison-Tammy Daily, CMA (AAMA) Membership- Jane Seelig, CMA-A (AAMA) Mentoring- Rita Michel, CMA (AAMA) Procedure Manual- Joyce Edds, CMA (AAMA), CPT (ASPT) Ways & Means- Sandra Johnson, MS, CMA (AAMA), CPC 2023 State Conference – Jane Seelig, CMA-A (AAMA) and Sandra Johnson, MS, CMA (AAMA), CPC 2024 State Conference –
District Reports	East Central District – Ratja (Kit) Stine, CMA (AAMA) First District – Clara Poirot, CMA (AAMA), CN-BC St. Joseph District – Brandi Gaumer, CMA (AAMA) Southeast District – Joyce Edds, CMA (AAMA), CPT (ASPT) Twelfth District – Rita Michel, CMA(AAMA) West Central District – Jeni Begley, CMA (AAMA)
Unfinished Business	
New Business	Election of Physician Advisor to a three year term–Dr. Kristi Peck's term has ended Members planning to attend AAMA Conference October 21-24, 2022, Myrtle Beach, SC Assignment of committees for the Annual Business meeting Timekeeper Tellers Pages Donations
Announcements	Time for head table line up Deliver raffle baskets to the Ways and Means table in the morning Bring your membership cards to the Annual Meeting Credentials desk
Adjournment	

INDIANA SOCIETY OF MEDICAL ASSISTANTS

66th Annual Conference
Business Meeting Agenda
April 23, 2022

Call to Order	Karen Pershing, CMA (AAMA), President
Presentation of the Colors	
Pledge of Allegiance	Marjorie Mikesell, CMA (AAMA),
Invocation	Joyce Edds, CMA (AAMA), CPT (ASPT) Chaplain
Medical Assistant Creed	Dianne Wimsett, CMA (AAMA), Vice President
Introductions	Karen Pershing, CMA (AAMA), President AAMA Representative: Rebecca Eldridge, CMA (AAMA) Board of Trustee Board of Directors Past Indiana Presidents Life Members Medical Assistant of the Year Recipients Leon Levi Award Recipients Golden Apple Award Recipients Honorary Members Conference Chair/Co-Chair
Credentials Report	Brandi Gaumer, CMA (AAMA) Chair
_____ registered _____ voting power _____ quorum _____ majority _____ 2/3	
Additions/Corrections to the Agenda	Karen Pershing, CMA (AAMA), President
Reading of the Rules	Jeni Begley, CMA (AAMA) Parliamentary Advisor
Introduction of Pages, Tellers & Timekeeper	Karen Pershing, CMA (AAMA), President
Instructions to Pages, Tellers & Timekeeper	Jeni Begley, CMA (AAMA) Parliamentary Advisor
Adoption of the Conference Program Booklet	Karen Pershing, CMA (AAMA)
Correspondence	Marjorie Mikesell, CMA (AAMA) Corresponding Secretary
Secretary's Report	Heidi Sisson, CMA (AAMA)
Report of the Annual Meeting Minutes Audit Committee	Paula Schubert, CMA (AAMA), CPT (IAPS)
Treasurer's Report	Paula Schubert, CMA (AAMA), CPT (IAPS)
Presentation of Bills	Karen Pershing, CMA (AAMA)
Report of the Financial Audit Committee	Jane Seelig, CMA-A (AAMA)
Nominating Committee Report	Jeni Begley, CMA (AAMA)
Nominations from the Floor	Karen Pershing, CMA (AAMA), President
Voting for Officers	Karen Pershing, CMA (AAMA) President
Election Results	Karen Pershing, CMA (AAMA), President
Supplemental Reports of Standing Committees	
Unfinished Business	Adoption of Proposed Budget 2023 ISMA Annual Conference Report
New Business	Election of AAMA Delegates (7) and Alternate (1) October 21-24, 2023 Myrtle Beach, SC
Announcements	Ways and Means PIPs Time for head table line up
Recess	

ISMA PROPOSED BUDGET 2022-2023

1	INCOME		Budget 2021-2022	Actual Current	Proposed 2022-2023
2		Dues	\$17,500.00	\$26,715	\$21,500.00
3		Ways and Means	\$2,400.00	\$0.00	\$1,000.00
4		Square Reader Payment	\$0.00	\$0.00	\$50.00
5		Magnet and Pin Sales	\$200.00	\$500.00	\$0.00
6		Education	\$500.00	\$627.35	\$500.00
7		Annual State Conference	\$0.00	\$0.00	\$500.00
8		National Conference	\$0.00	\$350.00	\$0.00
9		Donations – Pips	\$400.00	\$0.00	\$250.00
10		Total Income	\$23,100.00	\$26,972.50	\$23,800.00
11	EXPENSES	President	\$200.00	\$130.13	\$200.00
12		Vice President	\$100.00	\$0.00	\$100.00
13		Secretary	\$25.00	\$0.00	\$25.00
14		Treasurer	\$50.00	\$78.48	\$100.00
15		AAMA President’s Gift	\$60.00	\$24.06	\$60.00
16		Awards	\$150.00	\$0.00	\$150.00
17		Bylaws Procedure Manual	\$25.00	\$0.00	\$25.00
18		Certification	\$50.00	\$0.00	\$100.00
19		Computer Support	\$250.00	\$0.00	\$250.00
20		Donations	\$1,000.00	\$600.00	\$1,000.00
21		Flowers/Memorials	\$75.00	\$140.69	\$150.00
22		Historian	\$100.00	\$0.00	\$100.00
23		Installation Service	\$50.00	\$0.00	\$75.00
24		Insurance	\$300.00	\$187.00	\$300.00
25		Med-A-Scoop	\$1,350.00	\$0.00	\$500.00
26		Membership	\$200.00	\$291.00	\$300.00
27		Miscellaneous-Seelig Campaign	\$0.00	\$1,178.15	\$0.00
28		National Conference	\$6,500	\$5,447.81	\$10,050.00
29		Nominating Committee	\$15.00	\$0.00	\$15.00
30		Public Relations	\$3,000.00	\$750.00	\$3,000.00
31		State Conference	\$3,500.00	\$1,575.00	\$3,500.00
32		State Workshop/Speakers	\$300.00	\$64.50	\$300.00
33		Ways and Means	\$300.00	\$700.00	\$500.00
34		Website	\$3000.00	\$97.49	\$3,000.00
35		Total Expense	\$20,600.00	\$11,264.31	\$23,800.00
36	Investments				
37		IMMA (Money Market)	\$31,696.22		
38		Certificate of Deposit	\$16,027.74		
39		Total Investments	\$47,723.96		
40	Sub-Accounts				
41		Eva I Irwin Education Program Support Fund	\$3,821.61		
42		Student Support Fund	\$1,998.00		

Did you know?

By replacing your potato chips with grapefruit as a snack you can lose up to 90% of what little joy you still have left in your life.



© DEPOSITPHOTOS
© BRIGHTSIDE

I told my suitcases that there will be no vacation this year. Now I'm dealing with emotional baggage.

MY NEIGHBOR JUST YELLED AT HER KIDS SO LOUD THAT EVEN I BRUSHED MY TEETH AND WENT TO BED.



ISMA CODING CORNER

Effective January 1, 2022, the World Health Organization (WHO) reported health data can now be reported using ICD-11 codes. A recent report by WHO states 35 countries are now implementing these codes. It has not been determined when this will happen in the United States as it has to go through an implementation process here that requires the National Center for Vital and Health Statistics to navigate through governmental process: Hearings, proposed rulemaking, final publication date in the Federal Register. Other countries do not require the same legal/legislative process that we do for all laws and rules. ICD-10-CM replaced ICD-9 in the United States 25 years after it was endorsed by WHO, making us the very last country to implement among industrialized nations.

Other issues to determine and begin preparation are to be sure ICD-11 will function electronically; that it will provide linkage with terminologies in SNOWMED (Systemized Nomenclature of Medicine). SNOMED has designated standards for use by the federal government for the electronic exchange of clinical health information in the United States. It is also a required standard in the interoperability specifications of the U.S. Healthcare Information Technology Standards Panel.

Some changes we will see from ICD-10-CM to ICD-11:

- Codes for rare diseases

- More support codes for perinatal and maternal coding

- The addition of grade and stage coding for cancers

- An expansion of the Clinical Descriptions and Diagnostic Requirements for mental health coding.

Why did we move from ICD-10-CM to ICD-11? The National Committee on Vital and Health Statistics reports the following:

- To provide flexibility to eliminate the need for a clinical modification

- To enable continuous updates that would eliminate the need for future versions, such as ICD-12

- To improve coordination with other classifications and terminologies

So a new learning curve is approaching that will require retraining of those working with medical codes.

References: American Medical Association (www.ama-assn.org)

American Academy of Professional Coders (aapc.com)

Sandra Johnson, MS, CPC, CCS-P, CMA (AAMA)





**Our AAMA Board of Trustees
ready to work hard for all
members!**



Have you Downloaded the WebApp?

Android Phones: Using Chrome type in the website address: Insocmedasst.org hit enter and let the website appear. At the bottom of the screen you should be prompted to “add App to your home screen? Tap on it and watch your new WebApp appear! Every time you go into the Webapp make sure you refresh the page!!

IPhones: Using Safari type in the website address: insocmedasst.org and hit enter. At the bottom of your screen you will see a box with an arrow going up-touch that and scroll over until you see the prompt “add to home screen” tap the words and touch “add” at the top of the screen and watch your WebApp appear. Don’t forget to refresh the page when you go into the webapp!!

So much information at your fingertips! Please share this Information!

INDIANA SOCIETY OF MEDICAL ASSISTANTS, INC.
65TH ANNUAL CONFERENCE
APRIL 22-24, 2022

Holiday Inn Mishawaka-1208 E. Douglas Road-Mishawaka, IN



The Sky is the Limit!

Room Reservation Call: 574-258-4408 Room Rate: \$102.00 plus tax per night

Rooms are under St. Joseph District

Indiana Society of Medial Assistants, Inc. Conference

Members ___\$175.00 Students ___ \$150.00 Non-members ___\$200.00

Saturday workshops only which includes breakfast and lunch ___\$125.00

Name and Credential: _____ Phone: _____

Address (city, state, zip): _____

Email: _____ District: _____

First Time Attendee _____ Newly Certified _____ Newly Recertified _____

Member ID # _____

Present Office held: Local _____ State _____ National _____

Name of Guest (s) _____

Guest Prices for Meal Functions: (Please list number of guests attending function)

___ Friday night \$16.00 ___ Saturday Breakfast \$20.00 ___ Saturday Lunch \$16.00

___ Saturday Dinner/Banquet \$25.00 ___ Sunday Breakfast \$16.00

A full schedule of workshops, meetings, and additional information published in Med-A-Scoop.

Make checks payable to: St. Joseph District Conference Fund

Send completed registration form by March 19, 2022

To: Karen Pershing, CMA (AAMA)
52438 Oak Manor Drive
Granger, IN 46530

Call Karen Pershing at 574-217-5948 with any questions.

2022 ISMA Conference Agenda



The Sky is the Limit!

9 CEUs

All meetings are in St. Joseph A room and meals in St. Joseph B room

Friday, April 22, 2022

3:30 pm – 6:00 pm Registration Open
5:15 pm Pre-conference Board Meeting
6:15 pm Welcome followed by dinner
7:00 pm – 9:00 pm **Jennifer Pierce, RN, Executive Director Nursing Elkhart General Hospital**
TOPIC: COVID -19 Assessment and Updates

Saturday, April 23, 2022

6:00 am Registration Open
6:30 am – 7:45 am Breakfast buffet (Special PIPS seating)
8:00 am -10:00 am **Heidi Bickel, DNP, FNP-C** Topic: Diabetes
9:00 am Exhibits open
10:15 am – 10:30 am Registration for Annual Business Meeting
10:30 am -11:45 am Annual Business Meeting (Chapter Door Prize Drawing)
12:00 noon -1:00 pm Lunch Buffet **Rebecca Surratt Eldridge, CMA (AAMA)**, speak at 12:30
1:15 pm -3:15 pm **Kayla Borton, Founder of Just in Case Foundation**
Topic: SIDS Prevention
3:15 pm – 6:00 pm Free Time
3:30 pm Exhibits Close
6:00 pm – 6:30 pm Cocktails
6:30 pm -???. Dinner -Awards/Installation Banquet (Ways and Means Raffle drawings)

Sunday, April 24, 2022

7:00 am – 8:00 am Breakfast Buffet
8:15 am – 11:15 am **Janet Hailey, MHI, CMCO, CMIS, CMOM**
Topic: Quality Documentation and 1011 Coding Compliance Updates
11:30 am – 12:30 pm Post Conference Board Meeting

Don't forget the Chapter Door Prize!

It should be worth \$25 or more.

These door prizes are awarded at the end of the Annual Business Meeting!

Each chapter is also responsible for a \$50 theme basket ! This is a huge money maker for our ISMA.



Suggestions for baskets can be:

Gardening, Wine, Books and Tea, Chocolate, Cooking, Popcorn and Movies, Outdoors, Crafts and Hobbies, Romance, Baths, Summer, Pets, Beer, Kitchen, Herbs, Fruits/ Nuts, BBQ, Cheese, Puzzles, Flowers, Coffee, and just about anything will make a great basket!

One Door Prize and one raffle basket needed!

Two things to make your day better:



- Do not watch the news.
- Stay off the bathroom scales.

*Words to heal
the soul*



Soil-transmitted Helminths

sOI-uhl trans-mlt-uhd hEl-minth

As days get warmer and we want to work in our yards and gardens the CDEC has some words of advise for us.

Soil-transmitted Helminths (STH) are intestinal worms (“helminth” means parasitic worm) infecting humans that are spread through contaminated soil. STH infection is found mainly in warm and moist climates where sanitation and hygiene are poor. STH are considered [neglected tropical diseases \(NTDs\)](#) because they inflict tremendous disability and suffering yet can be controlled or eliminated.

There are three types of STH that infect a large part of the world’s population: roundworm (*Ascaris lumbricoides*), whipworm (*Trichuris trichiura*), and hookworm (*Ancylostoma duodenale* and *Necator americanus*).

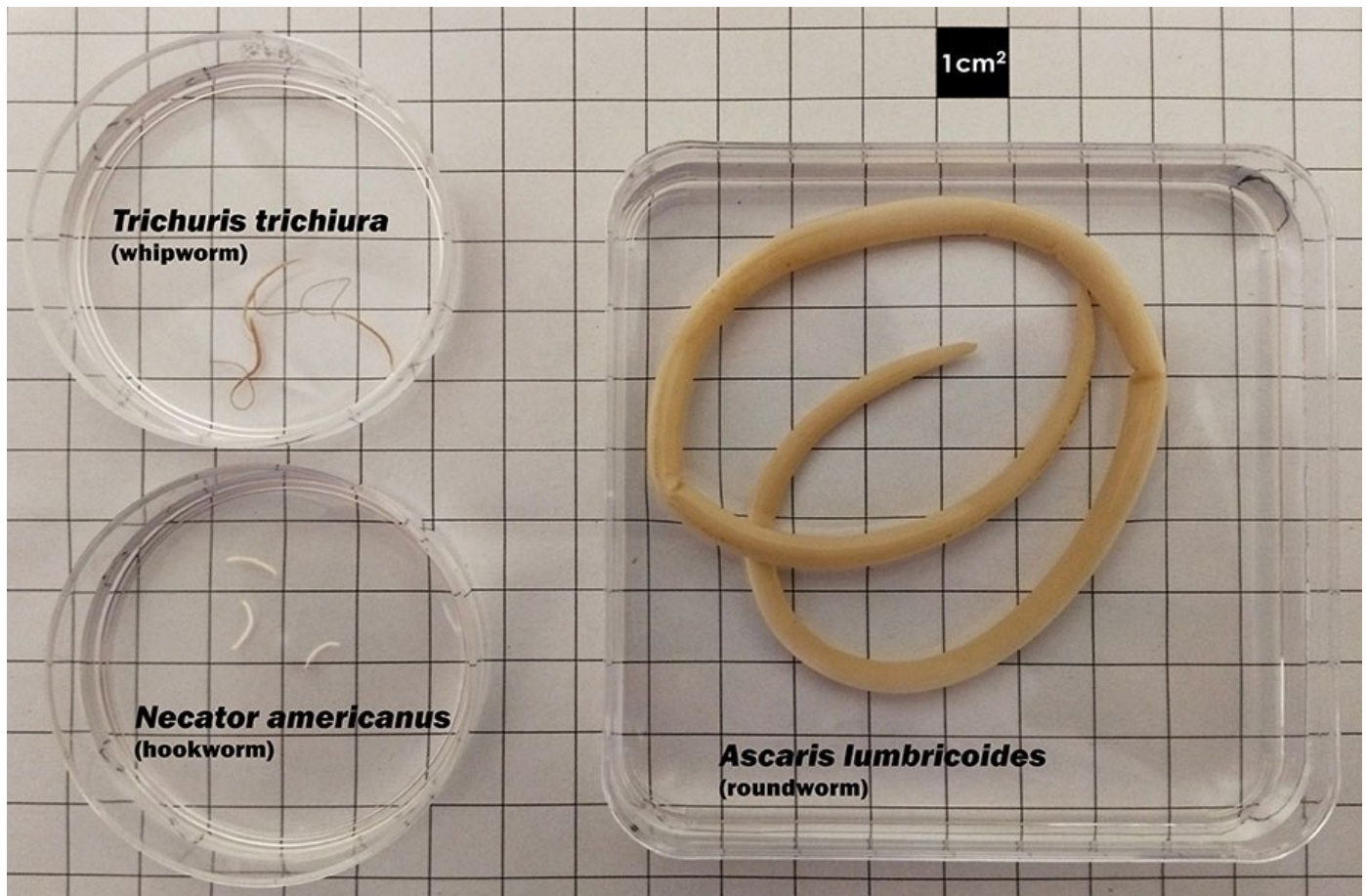
Key Facts

- Soil-transmitted helminths live in the intestine and their eggs are passed in the stool (poop) of infected people.
- Hookworm infections often occur in areas where human feces are used as fertilizer or where defecation onto soil happens.
- Hookworm infection is transmitted primarily by walking barefoot on contaminated soil.
- Ascariasis is the most common human worm infection, with 800 million to 1.2 billion people affected worldwide.
Soil-transmitted helminths are more common in areas where people lack safe access to adequate sanitation.

Prevention Tips

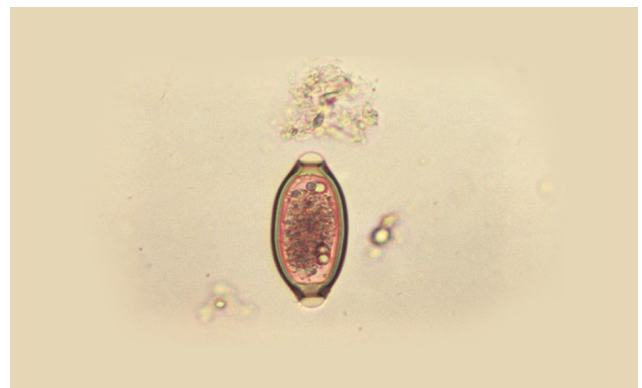
- Always wash hands with soap and water after working in the soil and before eating or handling food to help prevent infection from soil-transmitted helminths, especially in areas where sanitation and hygiene may be poor.
- Avoid ingesting soil that may be contaminated with human feces, including where human fecal matter (“night soil”) or wastewater is used to fertilize crops.

- Thoroughly wash and peel or cook fruits and vegetables grown in soil that has been fertilized with human fecal matter (“night soil”) or wastewater. The best way to avoid hookworm infection is not to walk barefoot in areas where hookworm is common and where there may be human fecal contamination of the soil. Also, avoid other skin contact with such soil and avoid ingesting it.



More Information

[CDC's Soil-transmitted Helminths Website](#)
[CDC.gov Features](#)



DATES TO REMEMBER

2021-2022 ISMA STATE BOARD MEETINGS AND WORKSHOPS

Our meetings during COVID are being held by WebEx

Meeting Deadline

June 18, 2022
September 17, 2022
November 12, 2022
February 18, 2023
April 28-30, 2023

Med-A-Scoop Deadline

May 7, 2022
August 6, 2022
October 1, 2022
January 7, 2023
March 11, 2023

Please e-mail all district news for publication directly to in Microsoft Word document format.

Pam Neu, CMA (AAMA)
Email: msneu@yahoo.com

State and National Websites:

www.insocmedasst.org
www.aama-ntl.org

ADDITIONAL DEADLINES

Membership Dues

December 31, 2022 to be eligible to vote at ISMA Annual Conference

Medical Assistant of the Year

Nominations by Chapters to President by **January 1, 2023** and forwarded to Physician Advisors (3) by **February 1, 2023** for judging. Award to be presented at Annual State Conference Banquet.

Leon Levi Award

Nominations to President by **February 1, 2023** for judging. Award to be presented at Annual State Conference Banquet.

Golden Apple Award

Nominations to President by **February 1, 2023**. Award to be presented at Annual State Conference Banquet.

Nominating Slate (Officers)

Slate of Officers to be presented at the **February 13, 2023** State Board Meeting.

Bylaws, Standing Rules, Resolutions

Any proposed changes to Bylaws, Standing Rules, Etc. must be provided to the membership 60 days prior to Annual State Conference.

To all of my fellow ISMA family/friends/members:

Thank you for the donation of the trees in my husbands (Jim) memory! Your thoughtfulness and generosity are so appreciated by myself and family. For all the cards, calls, texts, and other gifts for the family and myself –you are treasured! It was and still is so difficult to adjust but when you have friends such as the members of ISMA, it has made it more tolerable. Thank you all!

Pam, Matt, Jake, and Heidi Neu



**Official Newsletter of the
Indiana Society of
Medical Assistants, Inc.**
*An Affiliate of the American
Association of Medical Assistants*

Pam Neu, CMA (AAMA), Editor



**NOTICE– If you have a name or address
change **PLEASE NOTIFY**
National AAMA at
1-800-ACT-AAMA or www.aama-ntl.org**

**Our meeting for April
is being held IN PERSON in**

**Mishawaka, IN
April 22-24, 2022**